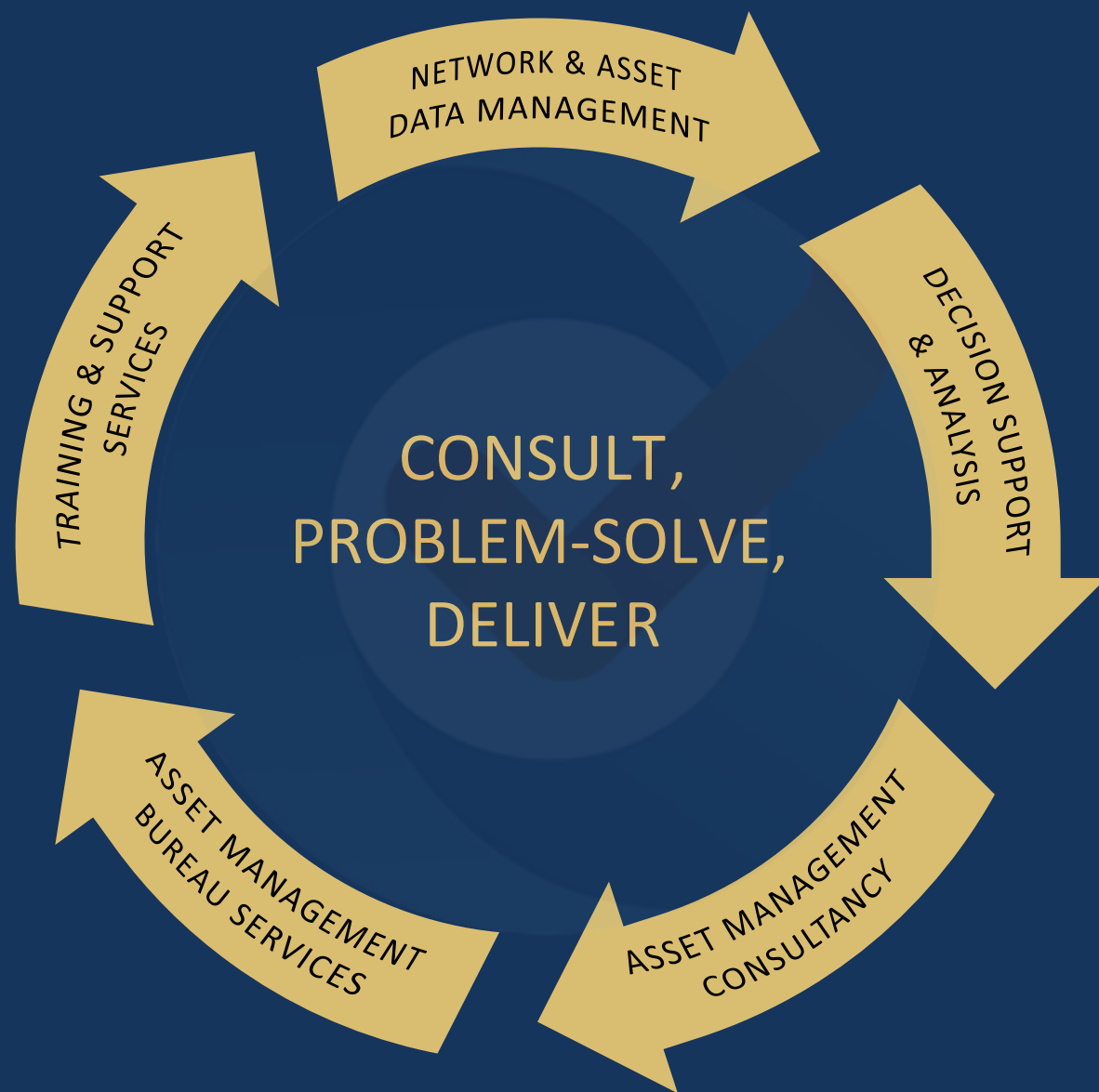


## ASSET MANAGEMENT SERVICES

Providing collaborative & personalised support services to maximise value and performance of your assets





### Contents:

Pg. 3 - Network & Asset Data Management  
Pg. 8 - Decision Support & Analysis  
Pg. 17 - Asset Management Consultancy

Pg. 24 - Asset Management Bureau Services  
Pg. 25 - Training & Support Services

Government agencies place strong emphasis on infrastructure asset management, treating it as a strategic priority to ensure value, resilience, and long-term performance of public assets, which are varied and constantly evolving.

At XAIS-PTS, our asset management support services provide a range of benefits to organisations seeking to optimise the lifecycle, value, and performance of their assets. Key drivers for enhanced asset management services include:

- ✓ Enhanced asset performance
- ✓ Regulatory compliance & risk management
- ✓ Increased operational efficiency
- ✓ Cost optimisation
- ✓ Improved strategic planning
- ✓ Future proofed solutions



In a sector that's under significant pressure to do more with less, it's our mission to support clients through end-to-end asset management solutions. Our consultancy team is made up of experienced pavement engineering and asset management practitioners who are focused on delivering real-world solutions that tackle real-world problems.

Through collaborative and personalised services, we support our clients to make the right decisions, maximising value and performance across all highway infrastructure assets.

# NETWORK & ASSET DATA MANAGEMENT

## Network Data Management Services

Network data management is vital to underpinning wider asset management activities and our team comprises experienced GIS consultants and technicians with local authority network management backgrounds. This combination of skills brings an important understanding of the benefits of a well-managed 'fit for purpose' network.

Highways asset management networks are varied in terms of how they are defined, what attributes they contain, and what services they support. Our network management services range from full network management resource support, including the provision of PMS and Gazetteer management solutions, to specific network quality reviews, associated hierarchy reviews, and other bespoke network reviews.

## Local Street Gazetteer (LSG) Reviews

Available as periodic reviews or as an ongoing service, our LSG reviews highlight road sections that may be missing from the LSG as well as the accuracy of the geometry and data currently being held. This review focuses on elements of LSG management that are not 'fit for purpose' from the perspective of pavement management guidelines.

As part of the review, our experienced consultants will work with you to define and evaluate the source network against latest available data.

We also operate an LSG software module within XA®, running on a hosted server to allow you to manage and maintain your LSG internally. Features include:

- Compliance with all the DTF 8.1 requirements to submit to GeoPlace
- Access all LSG functions from a central switchboard
- Sort and filter data using a variety of attribute fields

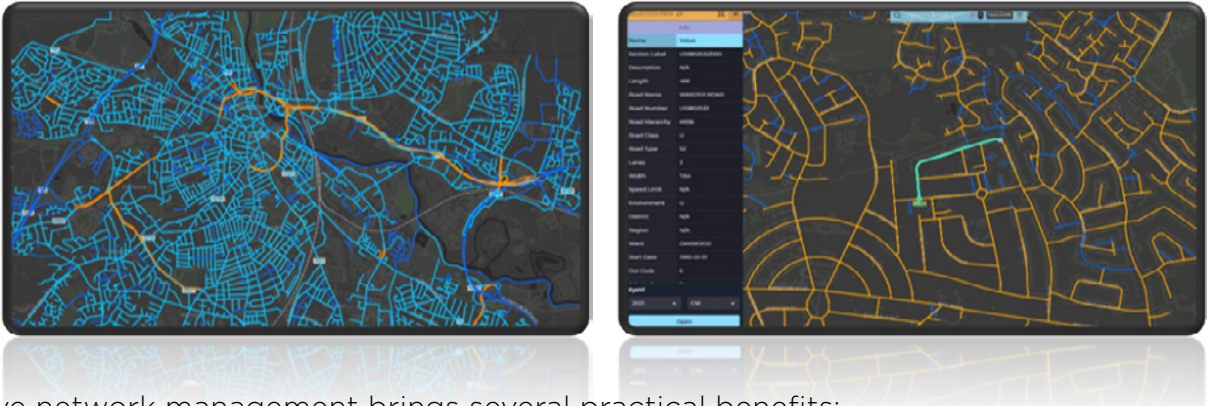
Please scan the QR code to download our LSG software product flyer.







## Pavement Management System (PMS) Network Management

PMS network management is an ongoing process that requires an understanding of how network and attribute data needs to be defined and maintained on a continuous basis. Through our experienced consultants, we look to take away the burden of maintaining your network through our network management services.

Updates to the PMS network are undertaken monthly based on refreshed GeoPlace data on new additions, edits and deletions. This service focuses on the 'drift' between a PMS road network and the LSG, aligning those networks with a view to single network management in the future. Where ongoing network maintenance is not required, our team also undertaken periodic network reviews.



Effective network management brings several practical benefits:

-  **Maintain full visibility of your highway network and attributes** - supporting accurate inventory, hierarchy reviews, and consistent asset decisions
-  **Secure correct funding** - align network data to your LSG for funding, asset valuation, and GRC reporting - meeting DfT Incentive Fund and Transparency Report requirements
-  **Plan capital works more effectively** - better network understanding enables smarter prioritisation based on function, condition, and risk
-  **Reduce liability through complete inspection coverage** - ensure the entire maintained network is routinely and defensibly inspected



### Pavement Maintenance Heirarchy Reviews

A maintenance hierarchy is a grading of the risk and consequences of not maintaining a road or footway. The purpose of assigning a maintenance hierarchy is to assist in the prioritisation of condition monitoring and treatment interventions. Maintenance hierarchy reviews use data and local knowledge against a documented process for the assigning of a hierarchy status. As road layouts, uses, and risk evolves over time, so will a maintenance hierarchy. As such, the hierarchy structure should be reviewed every 3-4 years as part of effective asset management practices.

Our reviews align with all ‘Well-Managed Highway Infrastructure: A Code of Practice’ recommendations, and our consultancy team will work collaboratively with you to ensure we understand your local network and priorities.



### Resilient Network Reviews

The resilient network is the proportion of the authority’s road network which is considered critical to sustaining vital services during periods of extreme weather, major incidents, and other disruption. A resilient network focuses on key strategic routes that enable emergency response, maintain health, care, and economic function, support access during severe weather or crises, and prioritise vulnerable users and communities therefore.

As an authority’s vital services and related asset locations change over time, so must the resilient network. An exercise in establishing strategic locations and creating a connected resilient network should be undertaken every 3 years. This review has been developed in alignment with all ‘Well-Managed Highway Infrastructure: A Code of Practice’ recommendations.

### Cross Boundary Reviews

This review aims to collate and understand the maintenance arrangements for all roads or footways that cross to another local authority.

The review involves consultation with neighbouring authorities to ensure a collaborative and coordinated approach is being taken to cross-boundary asset management and maintenance activities.

### Speed Limit Reviews

Speed limits assist various asset management processes including condition monitoring regimes, risk management processes, asset performance modelling, traffic flow management, and journey time reliability.

This review collates up to date speed limit information and applies it to the PMS network. Where real world vehicle speed information is available, a comparison assessment against speed limits would be included in this review.

### Winter Service Reviews

A winter service review - as outlined in the Well-managed Highway Infrastructure: A Code of Practice guidance - is a regular, risk-based assessment of how a highway authority plans and delivers its winter maintenance service, such as salting, snow clearance, and ice control. Our winter service reviews address several key questions:

- Do winter service operations, both planned and undertaken, align with the client’s policy?
- Do the documents align with the NWSRG and other national guidance?
- Is the required supporting documentation up to date e.g. risk assessments, material selection, spread rates etc?
- Does documentation align with other highway asset management documentation within the authority e.g. road class, network and maintenance hierarchy, resilient network etc?

Our experienced consultants will work with you to define the primary objectives, delivering a locally-focused solution.

Asset Data Management Services

The CIPFA Code of Practice and Highways Infrastructure Asset Management Guidance both highlight a need for condition data to be available across all infrastructure assets including carriageways, footways, and other assets such as street lighting, signage, drainage, structures, and road markings.

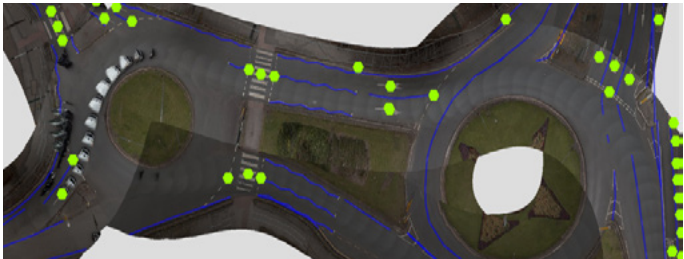
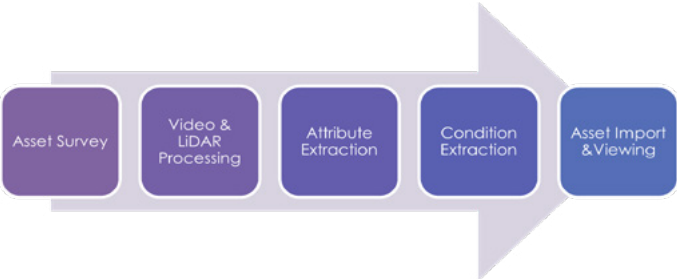
How can you adequately manage your assets if you don't have an up to date and accurate asset register, which outlines the assets you have, where they are located, what condition they are in, and ultimately what value they hold or what would it cost to replace them?

Whether you are a pavement engineer, asset manager or council member, asset inventory data is a pre-requisite for an effective asset management solution and is also a fundamental part of being able to produce Gross Replacement Costs (GRC), Depreciated Replacement Costs (DRC), and life cycle plans.

Through our asset data management services, we ensure you hold the requisite asset data and that an effective process is in place for maintaining that data. We provide:

- Data repository services
- Data migration services
- Data review services / ongoing monitoring
- Client-focused workshops to establish operational asset data collection and update processes, for ensuring records are maintained long-term

Through our iV 360° video surveys, we also collate detailed asset inventory data on site, which can supplement our comprehensive asset data management services.



DECISION SUPPORT & ANALYSIS

Decision support and analysis are important because they help individuals and organisations make better, faster, and more informed decisions. Through collaborative and client focused services, our experienced engineers and asset management consultants will support you in finding optimum solutions to your short term objectives and long-term strategic plans.



We can deliver decision support & enhanced analysis services across several areas:

- |                                       |                                     |
|---------------------------------------|-------------------------------------|
| ✓ Works Programming & Scheme Analysis | ✓ LASR Analysis & Collision Reviews |
| ✓ Asset Valuation                     | ✓ Lifecycle Planning                |
| ✓ Condition Projection Modelling      | ✓ iRAP Road Safety Analysis         |
| ✓ Active Travel Analysis              | ✓ PAS 2161                          |

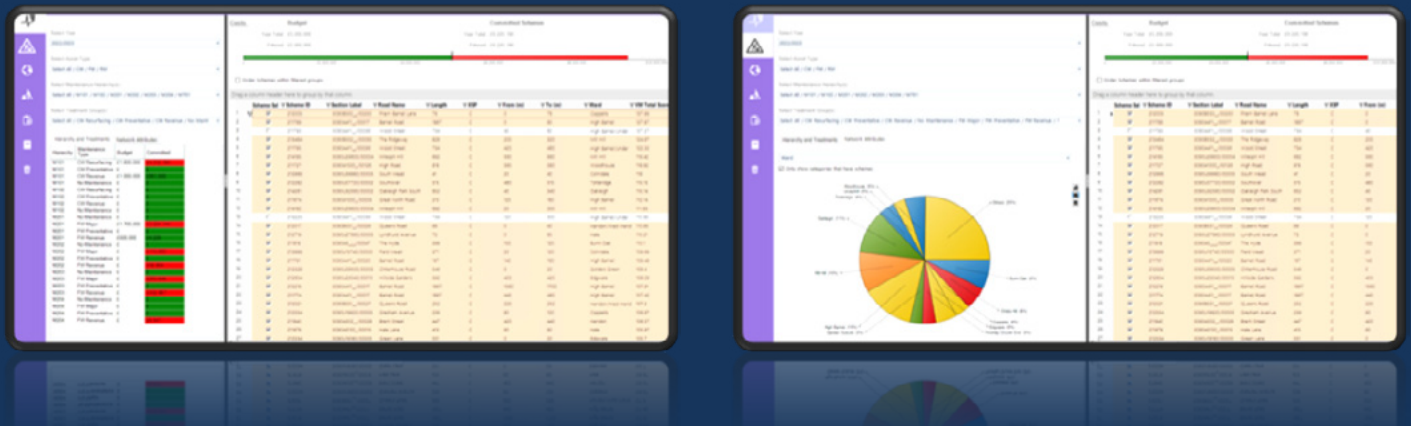


Works Programming & Scheme Analysis

Our XA<sup>®</sup> asset management platform offers extensive functionality for the management and reporting of highway infrastructure asset and condition data, and through our XA<sup>®</sup> Scheme Assembler module, core functionality supports our clients in effective and efficient scheme identification, management and implementation.

XA<sup>®</sup> Scheme Assembler will assist in the management of all schemes, allowing users to progress a scheme from initial identification as a length requiring intervention, through the practical design phase, and into operational implementation. Scheme support within XA<sup>®</sup> includes:

- Carriageways
  - Footways
  - Structures
  - Street Lighting
- Trees
  - Section 106
  - New Developments
  - Statutory Undertakers



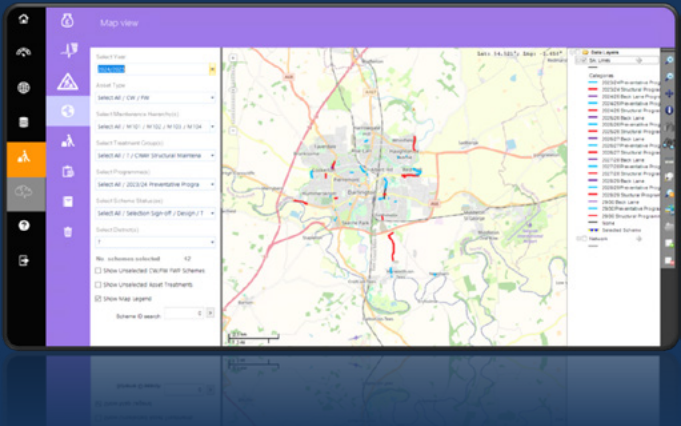
Within XA<sup>®</sup> Scheme Assembler, each defined scheme can be validated on-site and designed on a map within the XA<sup>®</sup> asset management platform as detailed polygon areas of treatment. At this stage of scheme management, users can take advantage of features such as building a bill of quantities, costs, dates, contractor details, and documents with image attachments.

Scheme Management

Having the most effective systems, strategy, and data now means that putting prioritised programmes of work together becomes much simpler and accurate against budgets.

All programme and scheme development is overseen by a qualified engineer. Services include:

- Prioritised inspection-led programming
- Scheme selection & validation (including on-site validation support)
- Scheme merging
- Budget breakdowns & value management



After completion, users can set up their scheme management system to record and compare out-turn costs against estimated / budgeted costs. This information can be securely stored within XA<sup>®</sup> for future reference.

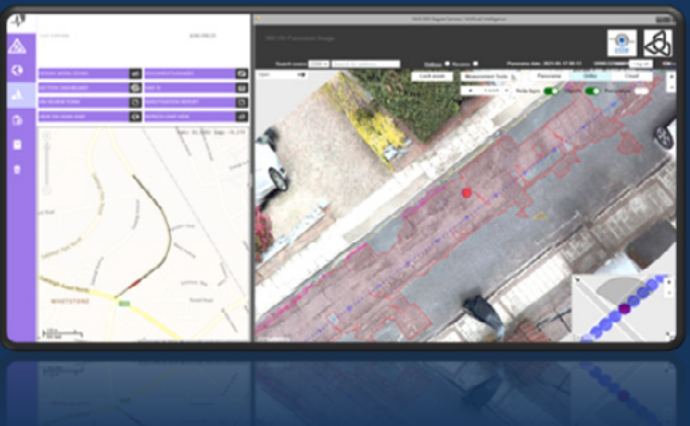
XA<sup>®</sup> Scheme Assembler delivers added value for clients by offering a comprehensive and fully configurable bill of quantities module. This is pre-loaded with all the items defined in the Design Manual for Roads & Bridges (DMRB).

Scheme Building

XA<sup>®</sup> Scheme Assembler enables existing inventory to be visualised against each scheme. Each inventory item can be selected for renewal, replacement, or removal.

New inventory assets may also be included in the overall scheme design. Scheme building incorporates the following:

- Scheme design
- Bill of quantities / cost frameworks
- Scheme progress management & sign off
- Scheme integration with asset data



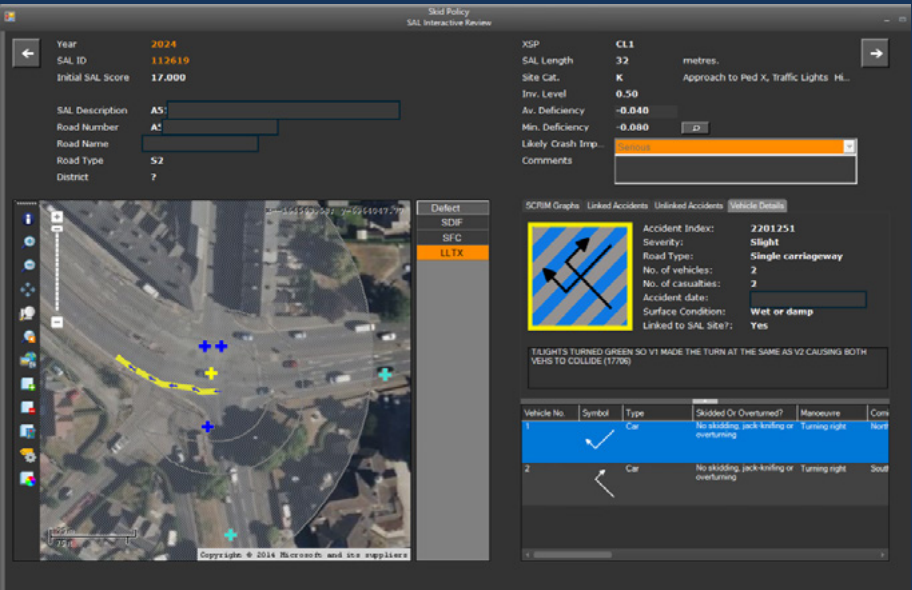
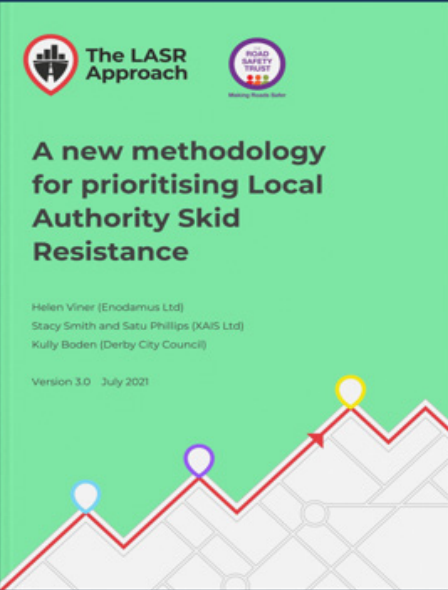
## Local Authority Skid Resistance (LASR) Analysis

LASR is an award-winning joint research project representing 5 years of extensive research including a 3-year pilot study on 168 sites covering 13 Local Authority networks. The LASR approach supports local authorities in effective network risk management through:

- Focusing on the relationship between skid resistance & collision risk
- Justifying treatment and investment priorities through an evidence-based approach
- Delivery of comprehensive data analysis and detailed site investigations

Within the XA® Risk Management module, clients can access a number of features including:

- Detailed collision reviews to understand the route cause of recorded collisions, which in turn feed into maintenance prioritisation
- Processing of detailed investigations and Skid Assessment Lengths (SALs) to produce prioritised treatments / actions in line with client skid policies and procedures



## Collision Reviews

XAIS-PTS with our partners Derby City Council and Enodamus Ltd presented a supplementary study to our LASR project at the PIARC World Congress in October 2023. The study recommended a strategy to undertake a thorough collision review on all sites at or below investigatory levels with one or more wet collisions also recorded.

Collision data should play an integral role within the prioritisation of skid deficient sites for further investigation and by undertaking thorough collision reviews, this enables treatments to be targeted at the sites more likely to deliver real-world safety benefits.

Through our XA® software, detailed collision reviews can be delivered by our experienced consultants as part of enhanced skid analysis services. Alternatively, if the Council wishes to undertake collision reviews in-house, you will be provided with system access and practical training.

## Asset Valuation

Asset valuation is a critical component of sound asset management practices - especially when organisations must prioritise limited budgets across multiple asset types. Conducting regular, annual valuations ensures accurate tracking of asset values, supports informed budgeting and maintenance decisions, and enables the production of robust, auditable financial statements.

Standard and advanced asset valuation methodologies have been developed by HAMFIG and CIPFA resulting in the CIPFA-published Code of Practice on Transport Infrastructure Assets.

Through our XA® system, asset valuation reports are fully aligned with CIPFA's advanced reporting methodologies, supporting Gross Replacement Costs (GRC), Depreciated Replacement Costs (DRC), and Annual Depreciation for carriageways, footways and other paved assets (e.g. cycleways and verges). Asset valuation can also be undertaken on various other asset types such as trees, structures, lighting, traffic management & signals, and all street furniture.

The information produced is collated in CIPFA and HAMFIG toolkits and results can be interpreted through a series of reports, certificates, and visualised outputs.

Lifecycle Planning

XAIS-PTS supports highway authorities in effective lifecycle planning through tailored workshops that define long-term asset management strategies, from construction to end-of-life. By modelling future performance based on investment scenarios and maintenance strategies, we help determine what treatments are needed, when they should be applied, and how to budget accordingly.

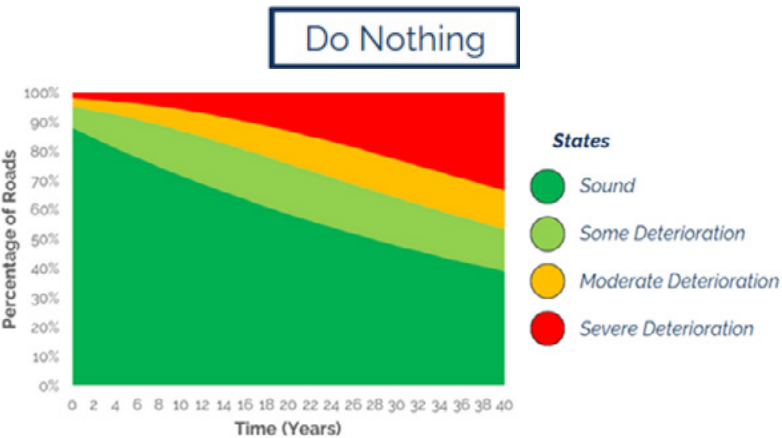
Through client-focused workshops we review key asset data, including available treatments, treatment costs, asset conditions, and expected treatment lifespans. This approach covers a wide range of assets including carriageways, footways, cycleways, structures, drainage, street lighting, traffic management systems, and street furniture, ensuring informed, sustainable decisions throughout the asset lifecycle.

Condition Projection Modelling

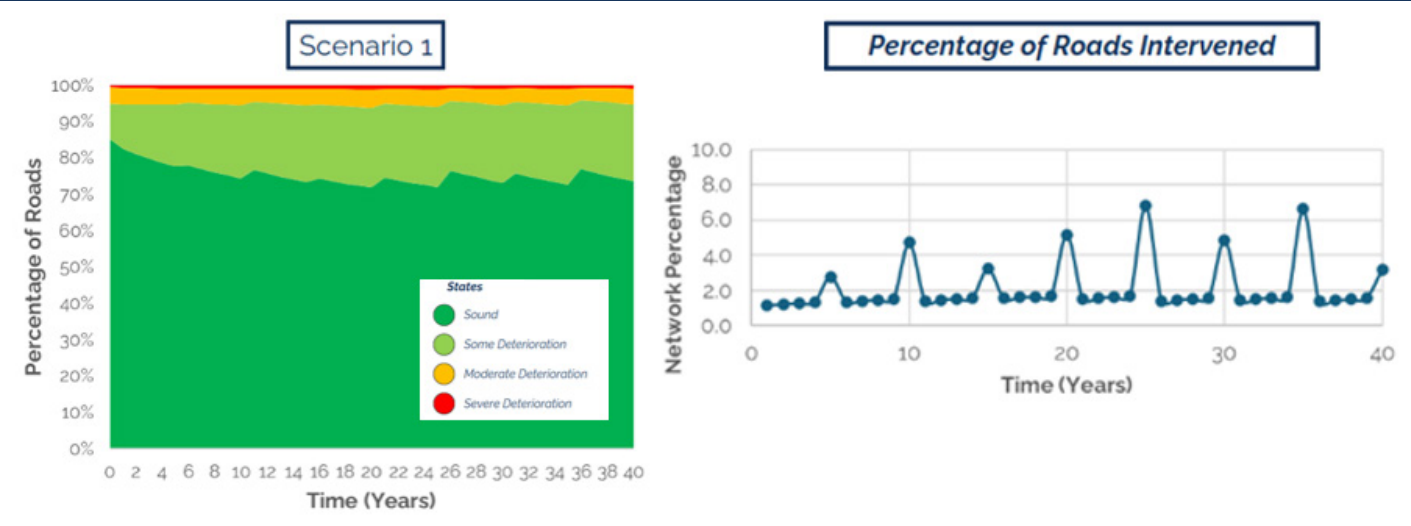
Condition projection modelling, delivered through XAIS-PTS’s powerful XA® asset management software, builds on the insights gained from lifecycle planning by forecasting how asset conditions will evolve over time.

Using current condition data from surveys, combined with information on treatment options, costs, and performance trends, the software helps project the condition of assets over varying periods of time. It estimates how the network will deteriorate and highlights potential maintenance backlogs.

XA® also enables highway authorities to test various budget scenarios, showing how different investment levels will affect future condition, which in turn supports data-driven strategic decision-making.



Through advanced modelling and scenario analysis, our consultants will support you in delivery of optimised asset management outcomes.



Practical applications of the modelling for highway authorities include:

- Prioritising maintenance interventions based on projected asset deterioration, ensuring the most critical issues are addressed first
- Understanding the impact of increased or reduced budgets — helping teams balance investment, risk, and long-term network performance
- Identifying patterns from historical condition data to highlight locations needing special attention or tailored treatment plans
- Planning asset maintenance schedules by forecasting when and where asset performance will become problematic, and optimising crew productivity
- Forecasting asset condition across the network to support funding bids, programming, and long-term planning
- Quantifying future maintenance backlogs makes it easier to communicate needs and justify investment decisions



International Road Assessment Programme (iRAP) Road Safety Analysis

iRAP is a system designed to evaluate and improve road infrastructure safety globally. The aim is to reduce road traffic fatalities and injuries by identifying and addressing high-risk areas, as well as improving road design and management. The iRAP safety assessment evaluates roads based on several factors including:

- **Road design and geometry** - Features such as curves, intersections, lane widths, and road surface conditions
- **Traffic volume and types** - Including vehicle types and pedestrian presence
- **Asset inventory** - Ensuring there are appropriate road signs, signals, protective barriers, line markings and more
- **Road user behaviour** - Analysing how the infrastructure interacts with traffic behaviours, like speeding or unsafe pedestrian crossings



Practical applications include:

- Inspect high-risk roads and develop iRAP Star Ratings and risk maps for motorists, motorcyclists, cyclists and pedestrians
- Track road safety performance and evaluate investment and maintenance decisions
- Integrate iRAP data with other established processes including SCRIM® / skid analysis and LASR crash modelling, to deliver balanced network safety management outcomes
- Incorporate data within XA® Scheme Assembler to deliver safety focused maintenance. We utilise iRAP safety ratings in our scheme prioritisation as standard
- Minimise the need for engineer site visits
- Complete road safety improvement planning or active travel analysis

Active Travel Analysis

Active travel management involves the planning, delivery, and monitoring of walking, cycling, and wheeling infrastructure and initiatives, to encourage more people to choose these modes for everyday journeys. It aims to create safe, accessible, and convenient routes, reduce reliance on cars, and support wider goals in public health, sustainability, and transport efficiency.

Through active travel analysis, which is completed through desktop reviews and on-site inspections, asset management and maintenance activities can be integrated with active travel considerations such as wheelchair accessibility and the provision of cycleway infrastructure.



PAS 2161

The recent introduction of PAS 2161:2024 presents a generational opportunity for developing industry practices, and a key feature of PAS 2161 is its flexibility regarding the technologies used for data collection. This approach encourages innovation and enables the integration of new solutions as they become available.

At XAIS-PTS, we are seizing this opportunity by leading the way in infrastructure assessment technology, providing a range of survey solutions designed to meet the specific needs of your network type, technological requirements, internal policies, and budget. Our surveys and analysis align fully with the new PAS, and can provide a range of additional data streams.

We will work collaboratively with you to define the best survey solution, and through our accredited XA® system and asset management support services, we can deliver an end-to-end solution in accordance with PAS requirements and your local asset management needs.

# ASSET MANAGEMENT CONSULTANCY

## Making Highways Services Smarter, Simpler, and More Aligned to Outcomes

At XAIS-PTS, we help highway authorities unlock better service delivery through structured service reviews — identifying inefficiencies, reducing duplication, and aligning resources to support strategic objectives.

Whether applied to an entire highways service or specific functions, our reviews are grounded in the principles of the Well-Managed Highway Infrastructure Code of Practice, with a focus on risk-based, data-led and outcome-focused decision making. Services cover:



LEAN Reviews



GAP Analysis



Performance Monitoring & Service Levels



Benchmarking



Risk Appraisal



Asset Management Framework Documentation



Funding Application Support

## LEAN Reviews

XAIS-PTS work collaboratively with a variety of clients to examine their people, processes, systems, and service direction, delivering practical recommendations that improve value and effectiveness.

We tailor reviews to suit the needs of each organisation, offering support across a wide range of core highway services, including:

- **Highway service strategic review** - Supporting senior leadership and service managers in examining team structures, delivery models, governance, budget alignment, and operational interfaces across the full highways service
- **Highway maintenance (capital and revenue programmes)** - Reviewing pavement and scheme design processes, optioneering stages, approvals, and delivery efficiency
- **Streetworks and network management** - Reviewing permit schemes, noticing processes, Traffic Regulation Orders (TROs), coordination of statutory undertakers, enforcement models, and customer interfaces
- **Highway drainage and flood management** - Assessing the end-to-end asset lifecycle from asset identification to inspection, maintenance, and capital improvement, and identifying opportunities to improve coordination between highways and flood risk functions
- **Structures and bridge management** - Focusing on inspection regimes, prioritisation processes, lifecycle planning, and the integration of structural condition data into wider asset management systems
- **Customer service and reactive maintenance** - Reviewing call handling, fault reporting, response workflows, inspection triggers, and hand-offs between teams. Opportunities often exist to streamline response categorisation and improve audit trails
- **Asset management planning and data systems** - Ensuring the right systems and data are being used effectively to inform prioritisation, investment decisions, and forward works planning. Includes integration of condition data, lifecycle plans, and performance monitoring

Each LEAN review is designed with the client’s goals in mind — whether to reduce cost, improve response times, unlock funding opportunities, or embed a more joined-up way of working. Our experienced team combines operational know-how with data and process expertise to deliver clear, actionable recommendations that make a difference.



## Gap Analysis

At XAIS-PTS, we conduct structured assessments to compare your existing highway asset management approach against recognised standards, such as ISO 55001 and the UK Roads Liaison Group's Well-Managed Highway Infrastructure Code of Practice documentation. This process identifies strengths, weaknesses, and opportunities across all key asset management areas - from policy and planning, to lifecycle management and risk assessment.

Our approach goes beyond simple checklist reviews. We assess operational data, interview key personnel, review decision-making frameworks, and compare them with industry exemplars and previous DfT Incentive Fund expectations. The outcome is a comprehensive review that highlights:

- Gaps in compliance or delivery
- Recommendations for improvement
- A prioritised action plan aligned to your service objectives and KPIs
- Support with future audit readiness or funding bids

Whether you're preparing for an external audit, re-aligning your strategies, or targeting performance uplift, our gap analysis service gives you a solid foundation for improvement.







## Performance Monitoring & Service Levels

XAIS-PTS supports highway authorities in establishing and refining their performance monitoring frameworks to meet both local priorities and national standards. Effective performance monitoring ensures accountability, identifies operational risks, and enables proactive service management. Our approach is to work collaboratively with clients to:

- Define service level expectations
- Develop and refine performance indicators
- Establish data collection and validation processes
- Implement regular review cycles and governance controls

We use tools like PowerBI to visualise performance management data and build interactive KPI dashboards. These can be used by senior leadership, engineering teams, and finance officers alike to track and optimise:

-  Network condition and maintenance responsiveness
-  Financial performance and value-for-money metrics
-  Sustainability and climate resilience goals
-  User satisfaction and customer complaints

Our team can also align performance metrics with those required by the DfT Incentive Fund and Well-Managed Highway Infrastructure Code of Practice, helping you evidence or support internal reporting requirements.

Ultimately, our goal is to help you turn performance data into operational insight - building a system that is both measurable and manageable.



## Benchmarking

Benchmarking is a powerful performance improvement tool that enables highway authorities to compare their highways and asset management functions against others - regionally or nationally - and our benchmarking services are designed to support a culture of transparency, learning, and service optimisation. We help local authority clients engage in collaborative benchmarking exercises, examining performance across a range of criteria such as:

- Network condition monitoring and lifecycle planning
- Safety inspections and intervention regimes
- Reactive and planned maintenance performance
- Use of innovation and technology
- Environmental and social value outcomes (e.g., carbon reduction, biodiversity)
- User satisfaction and accessibility

Our support includes:

- Designing and managing surveys and bespoke service packages for participating authorities
- Facilitating workshops to interpret results and encourage peer learning
- Producing data visualisations to identify trends and anomalies
- Developing evidence to feed into audits, performance reviews, or funding cases

By identifying ‘what good looks like’ in practice, authorities can gain valuable insight into how to adjust their own strategies. Benchmarking underpins better decision-making and allows asset managers to justify improvements in service delivery and investment levels with credible, comparative evidence.

## Risk Appraisal

Robust risk appraisal is central to contemporary asset management practices as exemplified within the Well-Managed Highway Infrastructure Code of Practice guidance. At XAIS-PTS, we help authorities embed risk-based approaches across policy, planning, and delivery levels to ensure services are resilient, defensible, and responsive to uncertainty.

We support clients in:

- Identifying strategic and operational risks across all assets
- Developing risk registers tailored to each asset type (e.g., carriageways, bridges, drainage)
- Applying consistent risk scoring based on likelihood and impact
- Linking risk to maintenance interventions and investment planning
- Developing governance frameworks for reviewing and updating risk management processes

Risk appraisals can be standalone or integrated into other processes such as lifecycle planning, performance monitoring, or funding submissions. We also provide training and templates to help embed risk-management thinking within day-to-day operational practices. Our approach gives authorities confidence that they can make well-reasoned decisions—backed by evidence, aligned to best practice, and ready for challenge or audit.

## Asset Management Framework Documentation

The foundation of any successful asset management approach lies in the quality and coherence of its supporting documentation. XAIS-PTS helps authorities develop a full suite of asset management documents that align with ISO 55001, the Well-Managed Highway Infrastructure Code of Practice, and DfT Incentive Fund expectations. We support the creation and review of:

- Asset management policies
- Strategy and objectives
- Levels of service documentation
- Lifecycle and financial plans
- Risk and performance frameworks
- Operational manuals and inspection protocols

Our team brings over 200 years of combined experience and has authored documents for a wide variety of clients. We don’t just draft – we workshop content with your teams, tailor frameworks to your local risk context, and help ensure governance structures are embedded.

By aligning documentation with national expectations and internal structures, we ensure you are well-placed to demonstrate transparency, efficiency, and strategic alignment across your organisation.

## Funding Application Support

XAIS-PTS has a strong track record in supporting highway authorities to develop successful funding applications. Whether you're seeking additional internal capital, submitting bids for Live Labs, the Local Transport Fund, or other innovation-led pots, our approach helps you build compelling, data-driven cases. We provide:

- Data audits and asset condition analysis
- Lifecycle cost modelling and forecasting
- Scenario-based impact assessments (e.g., what-if funding is reduced or increased)
- Business case support
- Mapping of application benefits to corporate objectives

Our funding application support services often begin with us understanding and workshoping the problem. Is a specific asset type underperforming? Is climate resilience becoming a pressure point? Is your current funding allocation insufficient to meet statutory obligations?

We then guide clients through data preparation, narrative development, and technical document production. The result is a credible and persuasive funding case that can be used for internal budget setting or external bid submission.



## ASSET MANAGEMENT BUREAU SERVICES

Our bureau services are designed to support the management and analysis of data for the purposes of national reporting and practical asset management. We utilise our UKPMS accredited and PAS 2161 compliant XA® asset management platform to deliver all bureau services and reports, giving you the assurance of quality.

Our UKPMS accreditation is available through the UK Roads Liaison Group (UKRLG) website [here](#). Bureau services and reports include:

- ✓ Single Data List 130-01 & 130-02 (England) - Outlines the proportion of the principal classified and non-principle classified network where maintenance should be considered
- ✓ Single Data List 130-03 - Outlines the proportion of the network at or below risk-based investigatory levels (ILs)
- ✓ BVPI 224b - Percentage of the unclassified road network where structural maintenance should be considered
- ✓ BV 187 - Outlines the percentage of footway needing repairs based on detailed visual inspections
- ✓ FNS / FMS Headline Indicator - Outlines the percentage of the surveyed length of footway at condition level 4 (structurally unsound) or condition level 3 (functionally impaired)
- ✓ PAS 2161 - Delivers condition category reporting in accordance with the new national reporting guidelines - with PAS reporting available using multiple survey / data types
- ✓ AEI Equivalent National Reporting - For national reporting purposes, available to be delivered alongside treatment-based survey deliverables.

Our experienced asset management consultants will work with you to identify the right reporting requirements to support your local asset management objectives as well as national requirements.

# TRAINING & SUPPORT SERVICES

Allied to our wider asset management services, we provide several training & support services in relation to our XA<sup>®</sup> software systems and we also offer external CPD certified training courses working in conjunction with the Road Surface Treatments Association (RSTA).

## XA<sup>®</sup> Help Centre

As a user of the XA<sup>®</sup> asset management system you will be given secure access to our online support documentation. These help articles, covering each function within the system, form part of a larger Help Centre from which you can also raise support requests and make suggestions around future feature development.

Our technical support team will respond to any tickets raised in the Help Centre within an agreed period.

## XA<sup>®</sup> Onboarding

As a new user of any XA<sup>®</sup> software module, we will provide training sessions to cover key software functionality and operation, including how to access and navigate the system.

Our consultancy team will then assess your priority needs for training and based on these will schedule an agreed number of further sessions, either in-person or via Microsoft Teams.

A dedicated point of contact for system related queries will always be available to respond to any immediate assistance you may need.

## XA<sup>®</sup> Face to Face Training

Our technical support and consultancy team are available for in-person or Microsoft Teams training sessions. Online sessions are approximately 2 hours in length. A member of our consultancy team will assess your training requirements and tailor the sessions to maximise value.

## Skid Resistance Training

This two-day course has been developed by the RSTA together with XAIS-PTS to support staff competency. Delegates will:

- Learn how to develop a hierarchy for their road network
- Develop the skills needed to identify appropriate risks
- Understand the entire skid analysis process – including insight into the award-winning LASR methodology
- Know what information to collect in order to identify and prioritise the appropriate action
- Understand the availability and suitability of different treatments and materials, and the implications of using different solutions
- Understand the key elements of maximising best value and minimising whole life costs.



## Asset Management Training

This two-day course is designed for asset management practitioners, and focuses on the foundations and applications of asset management, covering several topics such as:

- Organisational approaches to asset management and risk
- Managing service levels through a performance framework
- Adopting a risk-based approach to asset management
- Effective approaches to condition assessment, data collection, and data management
- Carbon reduction initiatives and the role of lifecycle planning and condition projection modelling
- Prioritisation techniques for effective maintenance planning
- Asset valuation for supporting investment decisions
- Lifecycle treatments, low carbon surface treatments, and sustainability initiatives





"Our asset management support services are tailored to each and every client we work with, and our dedicated consultants will work collaboratively with you to find the optimum solution to the challenges you face."

RICHARD BROOK BSC  
XAIS-PTS TECHNICAL DIRECTOR

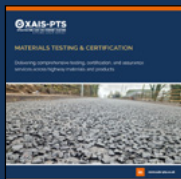
## GET HELP FROM THE EXPERTS

At XAIS-PTS, our focus is on end-to-end services and through asset management consultancy we support organisations to take a holistic and best-practice approach to highways asset management.

Just starting your asset management journey or looking to implement further service improvements, contact our team today on **01772 792899** or send an email to: **[sales@xais-pts.co.uk](mailto:sales@xais-pts.co.uk)**



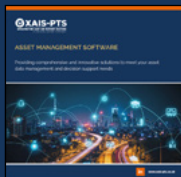
To learn more about our wider services, scan the QR codes below to see the following brochures:



## MATERIALS TESTING & CERTIFICATION



## ASSET MANAGEMENT SURVEYS



## ASSET MANAGEMENT SOFTWARE



## PROGRAMME DEVELOPMENT, FEASIBILITY & ASSURANCE, DESIGN & DELIVERY

