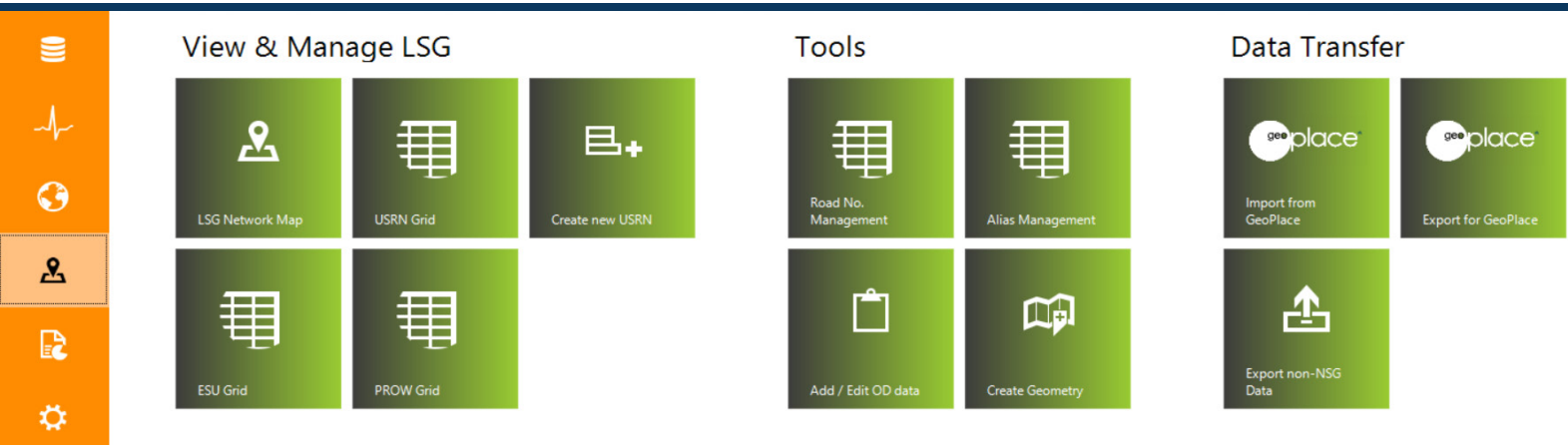
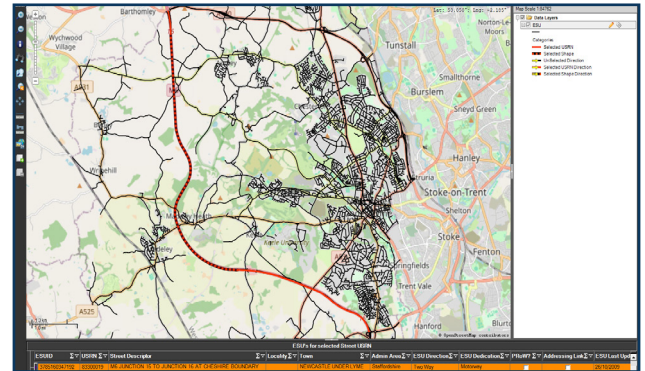


MANAGING YOUR LOCAL STREET GAZETTEER (LSG) THROUGH XA[®]

Maximising the use of the ESU and connecting networks to support local authority asset management

Key Features

- Available as a module within XA[®] running on a hosted server to allow you to manage and maintain your LSG
- Compliant with all the DTF 8.1 requirements to submit to GeoPlace
- Access all LSG functions from a central switchboard
- Sort and filter data using a variety of attribute fields

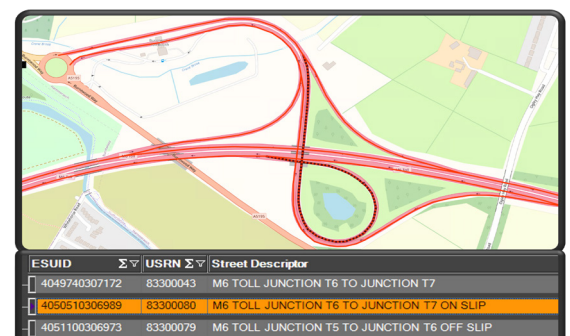
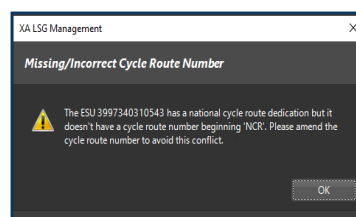
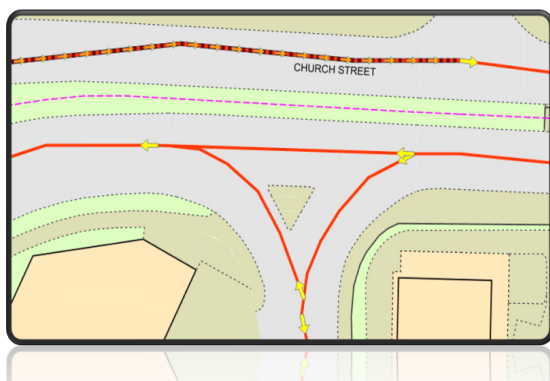


Mapping & Referencing Functions

- Directional referencing of an ESU easily viewable by display of arrows
- Toggle on / off feature within XA[®]
- Full view of Type 3 Road No USRN layout and the ESU's linked to it
- Hovering over an ESU will display key information about the ESU

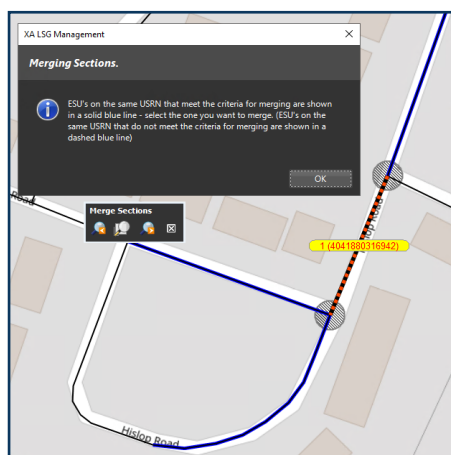
Intuitive Data Entry & Search Facilities

- Automated data validation to manage ESU & attribute data inputs e.g. when linking NCR, PROW etc.
- Search and filter on data grids including Street Name, Alias, USRN, ESUID, Road Number, NCR or PROW
- Warning & error log information displayed



ESU Management Features

- Split and merge functions
 - Option to split an ESU into two, creating new ESUID's with corresponding attribute data from the original record
 - Option to merge two ESU's into one if key attribute data between the ESU's match, creating a new ESUID with corresponding attribute data
- Re-allocation to another USRN
- Change history



Drag a column header here to group by that column.				
USRN	User	Date	Description	
5500015	peter.turland	24/04/2025	ASD Geometry was recreated for USRN 5500015, seq number 4, org ref 3450 for record type 63.	
5500015	peter.turland	24/04/2025	ASD Geometry was recreated for USRN 5500015, seq number 3, org ref 3450 for record type 63.	
5500015	peter.turland	24/04/2025	ASD Geometry was recreated for USRN 5500015, seq number 2, org ref 3450 for record type 63.	
5500015	peter.turland	24/04/2025	ESU (39834400310244) had updated geometry saved in table 14.	
5500015	peter.turland	24/04/2025	ASD Geometry was recreated for USRN 5500015, seq number 4, org ref 3450 for record type 63.	
5500015	peter.turland	24/04/2025	ASD Geometry was recreated for USRN 5500015, seq number 3, org ref 3450 for record type 63.	
5500015	peter.turland	24/04/2025	ASD Geometry was recreated for USRN 5500015, seq number 2, org ref 3450 for record type 63.	
5500015	peter.turland	24/04/2025	ESU 39834400310244 had its digitised direction reversed.	
5500015	tom.buckland	30/12/2024	ASD Geometry was created for USRN 5500015, seq number 4, org ref 3450 for record type 63.	
5500015	tom.buckland	30/12/2024	ASD Geometry was created for USRN 5500015, seq number 3, org ref 3450 for record type 63.	

User Attributes

- Create and hold user defined attributes at ESU level
- Edit and update attribute data seamlessly
- Export full listing from ESU grid
- Where updates or changes to ESU's are made in the LSG module, those changes will automatically mirror in the user attributes

Exporting for GeoPlace

- XA[®] system integration enables creation of export for GeoPlace in DTF 8.1 format
- Pre-export validation and reporting allows for errors to be identified and corrected ahead of data submission
- If required, streets can also be held in the system that need not be exported to the NSG

In-built system help

- Provides users with step-by-step guidance on navigating the system and completing common tasks
- Access in-built help documentation and 'How To' guides

